

Let's make sailing safer

At Mac N Hom Marine Equipments (P) Ltd., we are focused on range of products that meet the ever increasing demands of Marine based customers in terms of sophistication and diversification. We have brought to market innovative products, one after another to provide only the highest quality goods and services for your requirements and offer customised solutions and challenging applications quickly and cost effectively.

MAC•N•HOM
MARINE EQUIPMENTS (P) LTD.
 Let's make sailing safer



Hydraulic Steering Systems for Out Board Boats



Balanced Hydraulic Actuators



Rapid-Emperor:
 Planned for Outboard engines above 115HP to 400 HP.
 Ideal for Twin Out Board Engine configurations.

Rapid-Prince:
 Planned for Outboard Engines upto 115HP.
 A Cute Model for Small and Medium HP Boats. Very Compact and Quick Responding Type



Selection of Hydraulic Helm Pump

Hydraulic Helm Pump Assembly is selected based on number of Turns of Steering wheel, from Port Side Hard to Star board side Hard movement of Outboard Engine. "Lesser the Number of Turns, More the Effort to turn" is the Rule of Manual-Hydraulic Steering. Please refer the Technical Data Chart to know the details.

Selection of Hydraulic Hose / Stainless Steel Fittings

We recommend, Flexible Braided Hydraulic Hoses for transmission of Oil for Small Boats, and a combination of small length Hydraulic Braided hoses at the Helm Pump and Actuator ends for flexibility and Marine Protective coated Seamless Steel Tube in the middle area of vessel. We recommend and Supply Hydraulic Fittings with SS316L material.

“Let's Make the Sailing Safer”

Other factors to be considered during selection

Propeller Selection:- Larger The Propeller, Heavier Actuator to be selected Sea Going / Inland Vessel: Sea Going demand Heavier Actuator

Speed Of Vessel: Our Model: Rapid-Prince has a Limiting Speed of 35 Knots

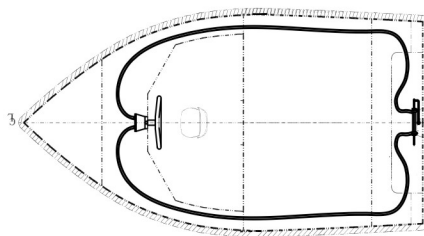
Our Model: Rapid-Emperor has a limiting speed of 50 Knots

Features

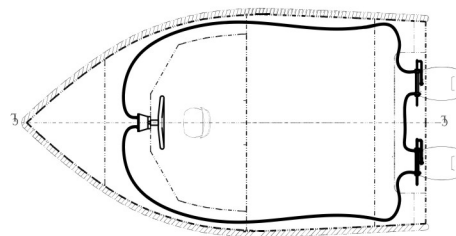
- ① IACS member M/s Indian Register of Shipping (IRS) Approved Design
- ② Compact, Zero-leak Hydraulic System.
- ③ Smooth and Firm Steering Drive, while “Stay-where-you-stop” facility
- ④ Hands-Free experience.
- ⑤ Zero maintenance for long service years.

Technical Data Chart		
Description	Prince	Emperor
1.Axial Thrust	207 Kgf @50 Kg/Cm ²	471 Kgf @50Kg/Cm ²
2. Torque (Pivot to Tillerpin-180mm)	37 Kg.m	84 Kg.m
3.Turns of Steering with 42cc/rev Helm Pump (Approx.)	1 + 1	2½ + 2½
20cc/rev Helm Pump(Approx.)	2 + 2	5 + 5

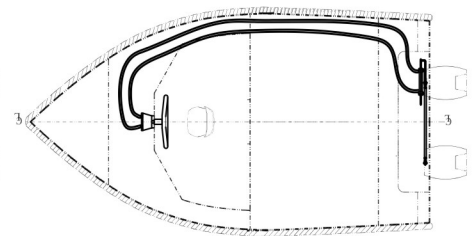
DIFFERENT TYPES OF STEERING ARRANGEMENTS



SINGLE CYLINDER - SINGLE ENGINE

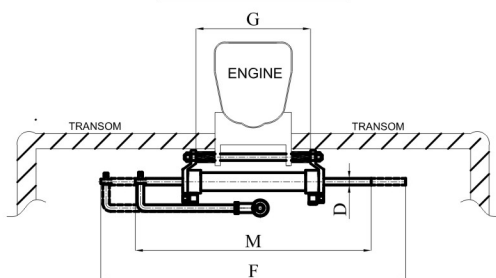


DOUBLE CYLINDER - TWIN ENGINE with HYDRAULIC CONNECTION



SINGLE CYLINDER - TWIN ENGINE with CONNECTION ROD

MOUNTING DETAILS



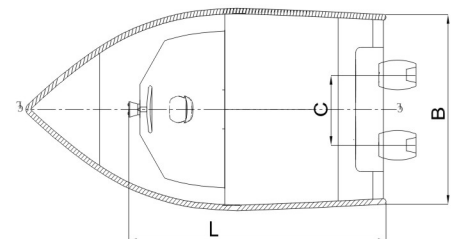
MOUNTING DETAILS

	Rapid Emperor	Rapid Prince
M	695 MM	580 MM
F	900 MM	800 MM
G	350 MM	250 MM
Piston Rod Dia. - D	20 MM	16 MM

DATA FOR STEERING SELECTION

VESSEL DETAILS

Helm Pump to Transom Distance - L		Metres
Breadth of Vessel - B		Metres
Draft of the Vessel		Metres
Hull form (Mono / Catamaran)		
No of Engines		Nos.
Power of each Engine		HP
Speed of Vessel		Knots
Distance between Engine Centre Lines-C		Metres



- NOTES: 1. Please fill in this data sheet with your Vessel data, and email to info@macnhomsystems.com
2. All dimensions are in mm.
3. Dimensions are reference purpose only; kindly confirm with our Technical Department.

Manufactured by:



An ISO 9001:2015 Certified Company

macnhom@gmail.com
www.macnhom.com



57/187-C, 'Vrindavan', Chilavannur Road, Kadavanthra,
Kochi-682 020, Kerala, India.
Ph: +91 484 2312396, 2319998

Marketed by:



Let's make sailing safer

info@macnhomsystems.com
www.macnhomsystems.com